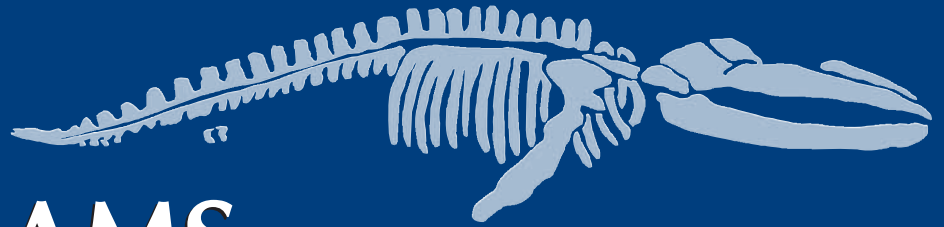


2011-2012

SCHOOL PROGRAMS

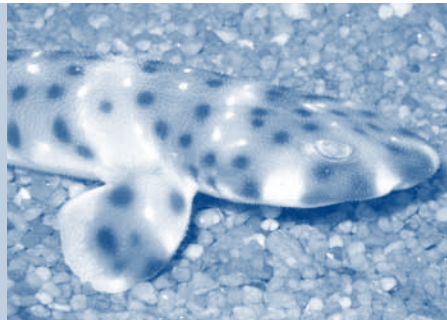


Seymour Marine Discovery Center at Long Marine Laboratory
University of California, Santa Cruz



Marine Science Field Trips & Educator Opportunities for K-12 & Community College

- Explore live creatures from the incredible Monterey Bay
- Discover how ocean scientists think and work
- Experience our NEW shark touch pool



Seymour Marine Discovery Center at Long Marine Laboratory

University of California, Santa Cruz

On the bluffs overlooking Monterey Bay, the Seymour Marine Discovery Center is dedicated to educating the public about marine science and ocean conservation. Education programs are built around:

- interactive exhibits focused on research conducted by scientists at the lab and around the world
- an aquarium representing more than 80 different species
- enriching interpretive programs and field experiences
- blue and gray whale skeletons
- life-size elephant seal sculptures
- a new shark touch pool!

Located at Long Marine Laboratory, the Seymour Center is a self-supporting program of the University of California, Santa Cruz.

**For More
Information**

(831) 459-3800

<http://seymourcenter.ucsc.edu>

SCHOOL PROGRAMS



Seymour Marine Discovery Center at Long Marine Laboratory
University of California, Santa Cruz



THREE GREAT WAYS TO VISIT!

The Seymour Center offers three great ways to immerse your class in the world of marine science, research, and discovery. Students will assume the role of a scientist and learn about current research projects underway at Long Marine Laboratory. All field trip options include access to our interactive exhibits, aquaria, and shark and invertebrate touch pools. Learn about the three types of field trip options below, and schedule your visit today!

☆ OPTION 1: Discovery Lab & Tour

As the ultimate field trip experience, a *Discovery Lab & Tour* immerses your students in hands-on lab activities, led by outstanding Seymour Center educators and volunteers. Students engage in marine science experiments using live animals and realia in our classroom (see *Discovery Lab Descriptions* on page 4). On your guided tour, visit the marine lab to see and learn about special marine mammals involved in important scientific research.

After the tour, be sure to plan extra time to visit the Ocean Discovery Shop and explore the Seymour Center's interactive exhibits and aquaria, including our new shark touch pool. Stay as long as you like!

On the day of your visit, you will receive coupons for all of your students, good for free admission on a return visit with a paying adult—great for follow-up enrichment and parent involvement.

Days: Tuesday-Friday

Dates available: October 18, 2011 - June 8, 2012

Start times: 8:50 AM and 10:50 AM

Duration: Approximately 100 minutes for lab and tour. We encourage you to plan extra time for exploring the aquarium, exhibits, and Ocean Discovery Shop after your lab and tour.

Group size: 32 students maximum, no exceptions; 5 adults maximum inside classroom during lab (teacher and up to 4 chaperones).

Chaperones: Minimum 1 adult per 8 students. Please bring only the number of adults necessary to transport your students.

Fees: \$100, all inclusive

Grade levels: K-12 and Community College. No more than two consecutive grade levels per lab program. See *Discovery Lab Descriptions* for lab activities available by grade.

To schedule: Submit application by lottery deadline (Wednesday, September 7, 2011) to increase your chances. After lottery, call (831)

459-3800 or check our web site for available dates.



★ OPTION 2: Reserved School Tour

Reserve your own docent to guide students through the sights and sounds of a working marine lab. While on tour students will see special marine mammals residing at Long Marine Lab who help scientists investigate how their well-adapted bodies function, and learn how ongoing science at the lab helps conservation efforts for animals in the wild.

Marvel at the enormous “Ms. Blue”—at 87-feet long, she’s one of the world’s largest blue whale skeletons! Discover how blue whales are suited for life in the sea, and how scientists study the largest mammal on the planet.

Before or after your tour, students will learn how scientists work through interactive exhibits and aquaria including our new shark touch pool. Don’t forget to visit the Ocean Discovery Shop for fun and educational souvenirs.

Days: Tuesday-Sunday (closed most Mondays; call for extended summer hours)

Dates available: All year round

Start times: 10:45 AM, 12:30 PM, 1:30 PM, 2:30 PM, 3:30 PM, Tuesday-Friday. Tours may also be available Saturday and Sunday. Additional tour times are available when *Discovery Labs* are not scheduled.

Duration: Tour lasts 30-45 minutes, depending on the grade level. We

encourage you to plan exploration time in the exhibit hall and aquarium before or after your tour, at no additional cost.

Group size: 20 participants maximum per tour; two tours maximum per time slot. Participant numbers **INCLUDE** adults. Groups larger than 40 can schedule two consecutive time slots. Call for details.

Chaperones: Minimum ratios for (adult:student): K-2 (1:5); grades 3-5

(1:6); middle school (1:8); high school (1:10)

Fees: Admission fees (\$4 per student, \$6 per adult) + Reserved Tour fees (\$25 per tour)

Grade levels: K-12 and Community College

To schedule: Call (831) 459-3800 at least **three weeks** in advance to check for space availability and to make reservations. *Make reservations far in advance for spring tour dates.*

★ OPTION 3: Self-guided Exhibit Exploration

We supply logistical information so you can create your own activities, or select from specially designed activities available on our web site. Students will learn how marine scientists think and work to understand life in the ocean through the Seymour Center’s shark and invertebrate touch pools, exhibits, aquaria, life-size elephant seal sculptures, gray whale skeleton, and one of the world’s largest blue whale skeletons. Knowledgeable docents illuminate how researchers work in the lab and in the field. Live animals inspire your students to pose questions as scientists do.

Self-guided groups are welcome in the Seymour Center exhibit hall and immediate surroundings, but are not permitted access to the marine mammal research area or on tours. Lunch at our picnic tables, visit the Ocean Discovery Shop, and stay as long as you like.

On the day of your field trip, you will receive coupons for all students, good for free admission on a return visit with a paying adult—great for follow-up enrichment and parent involvement.

Days: Tuesday-Sunday (closed most Mondays; call for extended summer hours)

Dates available: All year round

Start times: Anytime during open hours (Tuesday-Saturday, 10 AM-5 PM; Sunday, 12-5 PM), advance reservations required.

Duration: No time limit. Most groups stay 1-2 hours.

Group size: 160 students maximum

Chaperones: Minimum ratios for (adult:student): K-2 (1:5); grades 3-5 (1:6); middle school (1:8); high school (1:10)

Fees: \$4 per person, ages 4 and up

Grade levels: K-12 and Community College

To schedule: Advance reservations required. Call (831) 459-3800 to check for space availability and to make reservations. *Make reservations far in advance for spring dates.*



DISCOVERY LAB DESCRIPTIONS



These outstanding hands-on lab programs incorporate the *California Science Content Standards* in a series of engaging, age-appropriate activities. Classes are taught in our teaching lab and seawater lab by teams of science educators and volunteers. Lab activities are followed by guided tours to the marine mammal overlook.

Teachers are encouraged to select the program designed for their grade level (in parentheses below) so students can return each year to enjoy a unique program. Due to the grade-level-specific content of each *Discovery Lab*, **no more than two consecutive grade levels may be scheduled together for one program.**

Discovery Labs are available October 18, 2011 to June 8, 2012.

SPINES, SLIME & TUBE FEET (K)

Work with live sea stars, urchins, sea cucumbers, and sand dollars to explore the “gripping” world of spiny-skinned echinoderms. Marvel at the amazing diversity among these ocean cousins, and learn the surprising ways their body parts work.

AWESOME ADAPTATIONS (1)

Investigate live animals and plants to discover the variety of ways marine creatures fulfill their own needs. Learn about camouflage, symbiosis, and how different species defend themselves. Decipher how the shapes of teeth reveal what an animal eats.

FOSSIL FROLIC (2)

Compare live animals to real fossils from local rock formations for clues about creatures that lived here millions of years ago. Run an experiment where rocks bubble and fizz if they contain “hard evidence” of life from the ancient seas.

SHARK SCIENCE (2)

Explore the fascinating world of sharks and their cartilaginous cousins—rays and skates. Learn about sharks' amazing adaptations and what makes them different from other fish. Discover what a “mermaid’s purse” has to do with a shark’s life cycle.

SUITED FOR SUCCESS (3)

Marine animals have developed a dizzying array of special features and behaviors to survive the game of life. Learn how whales and dolphins are exceptionally adapted to life in the open ocean. Run an experiment to learn how various marine species increase their chances of survival from predators.

YOU OTTER KNOW (4)

The sea otter is one of Monterey Bay’s most well-known and important inhabitants, and it is key in shaping coastal ecosystems. Learn about the otter’s important role in a kelp forest food chain. Run a live experiment to see which kelp forest animals are best suited to evade hungry otters.

FROM STREAM TO SEA (4-5)

Work with a watershed model to learn how the condition of our coastal watershed affects local beaches where we fish, swim, and play. Learn why salmon are a sentinel of watershed health by studying their life history and food chain.

SCIENTISTS AT WORK (5)

Work with an assortment of live animals to develop scientific skills—observe strategies sea stars use to flip over, devise investigative questions from observations, and collect data to identify different species of sea stars and crabs.

ADAPTED TO THE DEEP (6-8)

Illuminate the bizarre world of the deep sea by conducting experiments to learn how pressure and visible light change with depth. Explore how deep water organisms have adapted to extreme conditions to find mates, hunt, and avoid predators.

ANALYZE THIS! (6-8)

Who’s the speediest echinoderm? Are sea otters opportunists? Investigate these questions—and more—while honing scientific skills with this array of experiments. An excellent lab to gear up for the science fair.

MARINE MAMMALS (9-12, college)

Compare and contrast the anatomy, physiology, and evolutionary history of marine mammals. Investigate realia from pinnipeds, cetaceans, and sirenians. Learn how Long Marine Lab scientists study dolphin physiology and elephant seal diving to reveal their phenomenal abilities.

PHYLUM FRENZY (9-12, college)

Work with a remarkable diversity of live animals from four phyla (cnidarians, echinoderms, mollusks, arthropods). Search for evolutionary similarities and differences. Observe live echinoderms through dissecting scopes to reveal microscopic structures and their amazing functions.

HOW TO SCHEDULE

a field trip

2011-2012



1. DECIDE WHICH TYPE OF FIELD TRIP YOU PREFER

See *Three Great Ways to Visit* (pages 2-3) for descriptions of each option.

- Option 1: *Discovery Lab & Tour*
- Option 2: *Reserved School Tour*
- Option 3: *Self-guided Exhibit Exploration*

2. MAKE A RESERVATION

☆ Option 1: Discovery Lab & Tour

SUBMIT AN APPLICATION FOR THE LOTTERY

- Read *Answers to Common Questions* (pages 6-7).
- Carefully follow all instructions on *Discovery Lab & Tour Application* (see insert).
- With each application, enclose payment information, either in the form of credit card or purchase order (PO). **Do NOT send checks or cash.** Your credit card or PO will be charged or invoiced in late September. Make POs payable to **Friends of Long Marine Lab/UC Regents.**
- Mail completed applications ASAP. **Applications (with payment information) must be RECEIVED by 5 PM, September 7, 2011, to be eligible for lottery assignments.** Applications for *Discovery Lab & Tours* are taken by mail only. We do NOT accept applications by fax, phone, or e-mail. Applications received after the lottery date will be processed on a first come, first served basis.

CONFIRMATIONS

Group leaders receive confirmation packets in late September. Teachers scheduled for October *Discovery Labs* will be notified by phone in mid-September to allow adequate planning time. You will receive a receipt in your confirmation packet. If you do not receive a confirmation letter by October 3, please notify us at (831) 459-3800.

REFUND AND CANCELLATION POLICY

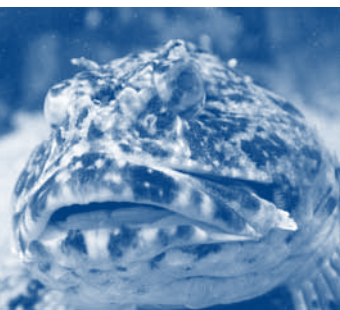
If we are unable to schedule a *Discovery Lab & Tour* on any of the dates you submitted for your class, you will not be charged/invoiced. However, any cancellation made by a group leader after the *Discovery Lab* has been scheduled and confirmed is **non-refundable**, unless another group fills the space.

GROUP SIZE

32 students maximum per *Discovery Lab & Tour*—**no exceptions**. **DO NOT BRING ANY ADDITIONAL STUDENTS OR UNSCHEDULED GROUPS.** Siblings are not permitted in the classroom during the *Discovery Lab*.

CHAPERONES

Please bring only the number of adult chaperones necessary to transport your students. Only five adults—the teacher and up to four chaperones—are permitted inside the classroom during the *Discovery Lab*. Remaining adult drivers/chaperones may explore the exhibit hall on their own during that time. They are welcome to rejoin students for the guided tour. All adults are expected to assist with supervision and appropriate student behavior.



☆ Option 2: Reserved School Tour

TO SCHEDULE, call (831) 459-3800 at least **three weeks** in advance.

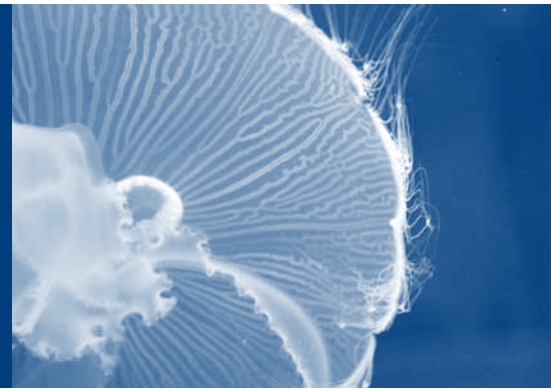
There is no need to apply for the lottery. If you're planning a field trip for spring, call well in advance to check availability and make reservations. All field trips are subject to availability throughout the year.

☆ Option 3: Self-guided Exhibit Exploration

TO SCHEDULE, call (831) 459-3800. Advance reservations required.

There is no need to apply for the lottery. If you're planning a field trip for spring, call well in advance to check availability and make reservations. All field trips are subject to availability throughout the year.

Answers to COMMON QUESTIONS



1. Why a lottery for Discovery Labs?

During spring months, more teachers request *Discovery Labs* than we can provide. A lottery is the most fair and efficient way to make *Discovery Lab* reservations. After the lottery, some openings are usually available for winter months, filled first come, first served.

2. Do I need to apply for the lottery?

It depends on the type of visit. If applying for a *Discovery Lab & Tour*, turn in your application by the lottery deadline to improve your chances for choice dates. To schedule a *Reserved School Tour* or *Self-guided Exhibit Exploration*, no need to apply for the lottery as they are scheduled by phone.

3. Can I do anything to improve our chances for the lottery?

Be sure to:

- Print neatly in black or blue ink. No pencil, please.
- Carefully follow all instructions

and complete all portions of the application.

- Include payment information with each application. Do NOT send checks or cash.
- If applying for more than one program, you MUST provide a separate application and separate payment information for each program.
- Request a wide variety of dates and times. Dates in May, April, and March are most frequently requested. If you can plan your field trip for December, January, or February, your chances greatly improve. Also, because 10:50 time slots are most requested, applying for 8:50 start times improves your chances.
- Double check that all dates you request DEFINITELY work with your school calendar and transportation arrangements. It is usually NOT possible to change your field trip date after lottery assignments.
- Mail in your application ASAP. **We must RECEIVE applications no later than 5 PM on Wednesday, September 7, 2011.** We do not accept applications by fax, phone, or e-mail.

4. When will I find out the results of the lottery and receive a receipt?

Applicants receive confirmation packets and receipts in late September. Teachers scheduled for October *Discovery Labs* will be notified by phone in mid-September to allow adequate planning time. If you have not received a confirmation letter by October 3, please call (831) 459-3800.

5. What if the Seymour Center is unable to schedule a Discovery Lab & Tour on any of the dates I requested?

We will contact you, giving you first choice for any dates and times still available. Be sure to respond immediately, as remaining slots fill quickly on a first come, first served basis.



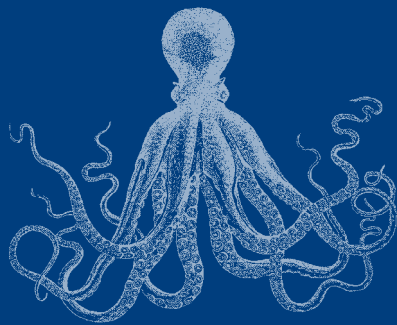
6. Will I be charged the \$100 fee if none of the available dates work for me?

No. If we are unable to schedule you for your submitted dates and times, you will not be charged.

7. What if more than one class from my school wants to schedule a Discovery Lab & Tour? Do we need to fill out separate applications for each class?

Yes. We need separate applications and payment information for each program. If two classes would like to visit on the same day, staple the two applications together and write





a note indicating you must attend on the same day. Realize this provides less flexibility in our scheduling and may reduce your chances of receiving your preferred date. We remind you that no more than 32 students may attend each program, and that we hold one program at 8:50 and one at 10:50.

8. If two classes are coming on the same day in one bus, what can the 10:50 class do while the 8:50 class is in session at the Seymour Center?

The Seymour Center exhibit hall does not open until 10 AM, so we recommend that the class scheduled for the 10:50 program make arrangements to enjoy the beach at Natural Bridges State Beach, a short drive up the road. **You must call Natural Bridges two weeks in advance at (831) 423-4609, to make reservations and obtain parking passes.** Be advised that Natural Bridges has no sheltered areas, therefore in the event of poor weather, be sure to bring games/activities for students to do in cars/on the bus. Be sure the class is back at the Seymour Center by 10:45.

9. If my class is scheduled for a 10:50 Discovery Lab may

we arrive when the Seymour Center opens at 10 AM to explore the exhibit hall prior to our program?

Yes, you are welcome to arrive at 10 AM for exploration time, **however please call to let us know you are coming early.** Upon arrival, a staff member will greet your class and collect your signed Behavior Contract (included in your confirmation packet). After the greeting we ask that you divide your students into small groups, accompanied by a chaperone, to explore the exhibit hall and aquaria.

10. Can we eat lunch or snacks at the Seymour Center?

We have several outdoor picnic tables for school groups to enjoy on a first come, first served basis. Your group may re-enter the Seymour Center to view the exhibits after eating. No sheltered eating areas are available in the event of poor weather, so please make a backup plan.

11. What if it's after the lottery and I'm just now reading this brochure? Am I too late to book a Discovery Lab for this year?

After processing all lottery applications in September, we reopen the application

process for *Discovery Labs*. Check our web site (<http://seymourcenter.ucsc.edu>) or call (831) 459-3800 for dates and times still available. Openings fill first come, first served.

12. Is there a way I can bring a school group to the Seymour Center if my class has more than 32 students or the remaining dates/times for Discovery Labs don't work?

Yes! Teachers can schedule *Reserved School Tours* or bring groups on *Self-guided Exhibit Explorations* of the Seymour Center's exhibit hall, aquaria, blue whale skeleton, elephant seal sculptures, and gray whale skeleton. Read *Three Great Ways to Visit* (pages 2-3) for more information.

13. Have a question we haven't covered?

Contact the Seymour Center at (831) 459-3800 during business hours, Tuesday-Saturday, 10 AM-5 PM; Sunday, 12-5 PM.



EDUCATOR

opportunities & resources

<http://seymourcenter.ucsc.edu>



UNDERWATER ROBOTICS

workshops for students (grades 6-12), teachers, and parents

The Seymour Center continues our partnership with the Marine Advanced Technology Education (MATE) Center of Monterey Peninsula College to offer a two-part workshop series designed

MPC

Monterey Peninsula College

to teach students in grades 6-12, and their teachers or parents, how to build underwater remotely operated vehicles (ROVs). Learn how to incorporate marine science, technology, and physical science concepts into your curriculum by spending a day at the pool building an ROV!

In Part 1 of the series, teachers and/or parent mentors learn what the MATE Center's ROV program is all about, and

how to get your students involved in the underwater robotics program and annual ROV contest held each spring. Part 2 of the series provides an opportunity for your students to design, build, and test their own ROV using simple, affordable materials.

Both workshops will be held at the on-campus swimming pool at UC Santa

Cruz. There is no fee to attend; however reservations are required for each workshop.

To register, or for more information on the ROV Workshop Series and the MATE Center ROV Contest, call the Seymour Center at (831) 459-3800, or visit our web site (<http://seymourcenter.ucsc.edu>).



MATE
MARINE
ADVANCED
TECHNOLOGY
EDUCATION
CENTER

Part 1: Orientation for Teachers/Parents (grades 6-12)

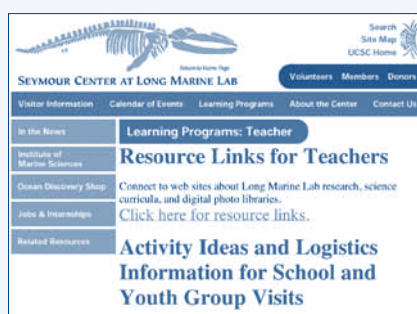
Saturday, November 5, 2011

Morning session 10 AM-12 PM OR afternoon session 1-3 PM.

Part 2: ROV Building Workshop for Students (grades 6-12)

Saturday, December 3, 2011

Morning session 10 AM-12 PM OR afternoon session 1-3 PM.



Prepare for your visit to the Seymour Center by using the activities on our web site.

ACTIVITIES & RESOURCES

for school and youth group visits

Visit the "Activities and Resources" page of our web site to access activities and forms designed to assist in planning your school or youth group's visit to the Seymour Center. In addition to logistical information for teachers and chaperones, you'll find a number of activities for elementary school students that can be led by chaperones during your group's visit. Also provided are ready-to-copy activities for middle and high school students. Teacher answer keys are provided.

Ever wonder about the history of "Ms Blue," our 87-foot blue whale skeleton? Puzzled by how to explain what science is and how it works to your kindergarten class? Find answers at the "Activities and Resources" page of our web site!



LONG MARINE LAB

RESEARCH in your classroom



Seymour Center programs that include tours will afford students the opportunity to learn about the Marine Mammal Physiology Project at Long Marine Lab (LML). The project is a living classroom where students, scientists, and animals work together to solve some of the great underwater mysteries of marine mammals. Prepare students for their tour and integrate these cutting edge adventures into your classroom by visiting www.mmpp.ucsc.edu prior to your field trip. Learn how scientists work cooperatively with LML resident dolphins, Puka and Primo, and other marine animals, to directly translate their work into the preservation of marine ecosystems.

Help us protect our ocean—dive in and explore www.mmpp.ucsc.edu. It's a great resource to use with your students before or after their Seymour Center field trip!

The Marine Mammal Physiology Project web site features:

- ✧ Biographies on our resident dolphins, sea otters, and birds.
- ✧ Interactive pages featuring our work with a Hawaiian monk seal—the most endangered seal in the country. Learn how students can help to protect these critically endangered animals.
- ✧ Standards-based curriculum from our “Expeditions to Antarctica.” Discover how marine mammals have adapted to survive in one of the harshest environments on the planet!
- ✧ Highlights from our research projects around the world.



NMFS Permit #13602

SEASHELL SCIENCE

education kit

The Seymour Center has partnered with the Santa Cruz Museum of Natural History to offer a seashell education kit for teachers. The *Seashell Science* kit contains shells representing nearly 30 species of marine animals from Monterey Bay. Curriculum suggestions for grades K-2 are included, focusing on adaptive features of seashore animals. Activities are aligned with *California Science Content Standards* and challenge students to sharpen their observation skills, while incorporating language and creative arts. In addition to the shell collection and curriculum, the kit also includes activity sheets, answer keys, two reference books, and a teacher preview pass to visit the Seymour Center.

To learn more about the *Seashell Science* kit, visit the Seymour Center web site (<http://seymourcenter.ucsc.edu>) or call (831) 459-3800.

To reserve *Seashell Science* or other education kits for loan from the Santa Cruz Museum of Natural History, call the museum at (831) 420-6115. Kits are available by reservation only.



EDUCATOR

opportunities & resources

<http://seymourcenter.ucsc.edu>



SEA SEARCH

for high school teachers and their students

Sea Search is a marine science program designed to provide high school science teachers with an easy way to incorporate marine science into their curriculum, and to provide opportunities for high school students to become engaged in science through the Seymour Center's ocean-themed exhibits, programs, tours, and volunteer opportunities.



From the Seymour Center web site, students simply print the *Sea Search* activity that interests them, they then visit the Seymour Center to complete their activity using our aquaria and exhibits, and return the completed activity to their teacher for credit.

Created by high school biology teachers, the *Sea Search* curriculum is aligned with *California Science Content Standards*, and ranges in topics from physiology to geology.

For more information about *Sea Search*, visit our web site (<http://seymourcenter.ucsc.edu>) or call (831) 459-3800.



PEREGRINE FALCON

research and conservation
school assemblies



Don't miss the
Seymour Center's
peregrine falcon exhibit!

The Santa Cruz Predatory Bird Research Group (SCPBRG), based at Long Marine Lab, was instrumental in the effort to bring the peregrine falcon back from the brink of extinction, and now they want to share the inspiring story of the peregrine. Scientists from the SCPBRG are available to visit your school for assemblies for students in grades three through adult. Meet a live peregrine falcon during the presentation, learn about their amazing adaptations for survival, and hear the stories of the dedicated scientists whose work led to the removal of peregrines from the Endangered Species List.

Great teaching resources and activities for your students are also available.

For more information or to schedule an assembly, go to www.scpbrg.org on the web, or e-mail falconet@ucsc.edu.

school programs

VOLUNTEER TRAINING



The Seymour Center is currently accepting volunteer applications from individuals interested in helping us teach *Discovery Lab and Tours* to K-12 and community college groups. If you or someone you know enjoys children and the ocean, and has availability on a weekday morning, then this is the perfect opportunity to dive in and get your hands wet! **Training begins in late September. For more information or to apply, visit our web site or call (831) 459-3800.**

“Organized staff and presentation, hands-on, informative, awesome exploratory activities. It is the best trip we take all year!”

-1st grade teacher, Valencia Elementary School

FUNDING & FRIENDS

Providing K-12 and community college students with marine science education would not be possible without the generous support of many individuals and businesses. The Seymour Center is especially pleased to acknowledge **The Morgan Stanley Foundation, ACRA Aerospace, Inc., SIMA Environmental Fund**, and the generosity of an anonymous donor for their stalwart support. All Seymour

Center education programs, staffing, and daily operations are funded through program and admission fees, fundraising events, memberships in the Friends of Long Marine Lab, as well as private donations, grants, business sponsorships, facility rentals, and Ocean Discovery Shop sales.

For more information on supporting our programs, please call (831) 459-4568.



2011-2012

EAT & SHOP

lunch

Enjoy our outdoor picnic tables for snacks and lunches. Plenty of picnic tables are available on a first come, first served basis. After eating, return to explore the exhibit hall at no additional charge. Picnic tables are open to the elements, so make backup plans in the event of poor weather.



ocean discovery shop

You and your class are invited to visit the Seymour Center's Ocean Discovery Shop. Many fun, educational books, marine-related gift items, as well as teacher resource materials are waiting for you. Plan time for your class to visit the store in groups of up to six students at a time with a supervising adult. All gift shop proceeds benefit Seymour Center education programs.



University of California, Santa Cruz
100 Shaffer Road
Santa Cruz, California 95060
<http://seymourcenter.ucsc.edu>

Nonprofit Organization
U.S. POSTAGE
PAID
Santa Cruz, CA
Permit No. 32

Address services requested

♻️ Printed locally with vegetable-based inks on 55% recycled, 30% post-consumer waste, chlorine and acid-free paper.

2011-2012
SCHOOL PROGRAMS
Seymour Marine Discovery Center at Long Marine Laboratory

OPEN IMMEDIATELY!
APPLY NOW FOR FIELD TRIPS AND EDUCATOR WORKSHOPS
Discovery Lab Lottery Deadline: September 7, 2011



SHARK TOUCH POOL!



New shark touch pool now open!

Students and adults alike are invited to get up close and personal with our fishy friends. See what a shark really feels like, marvel at their amazing adaptations, and learn why their future is in our hands.

DIRECTIONS

From Santa Cruz, take Highway One (Mission Street) north. Turn left on Swift Street. Turn right on Delaware Avenue. Follow Delaware Avenue past Natural Bridges State Beach to the lab entrance at the end of the road. The Seymour Center is the last building on the ocean bluff.



ADDRESS CHANGES

Please assist us with keeping our school/teacher mailing list current, reducing mailing costs, and conserving resources. Contact the Seymour Center at (831) 459-3800 with mailing address changes, additions, or removals. We appreciate your help!

2011-2012

DISCOVERY LAB & TOUR

application



OFFICE USE ONLY

8:50 10:50

SEYMOUR MARINE DISCOVERY CENTER
AT LONG MARINE LABORATORY

- Please read carefully, PRINT NEATLY, and fill out completely.
- You must include payment information (\$100 per Discovery Lab) in the form of EITHER credit card information or purchase order (PO), payable to Friends of Long Marine Lab/UC Regents. POs will be invoiced. Do NOT send checks or cash.
- If applying for more than one Discovery Lab, enclose a separate application for EACH Discovery Lab. Photocopies of applications are accepted.
- To be included in lottery assignments, application and payment information must be RECEIVED before 5 PM on Wednesday, September 7, 2011. Applications are taken by mail only. We do NOT accept applications by fax, phone, or e-mail.
- Send applications and payment information to:
Seymour Center at Long Marine Lab
Attn: Discovery Labs
100 Shaffer Road, Santa Cruz, CA 95060

(Dr./Mr./Mrs./Ms.) _____
GROUP LEADER FIRST NAME LAST NAME

SCHOOL NAME SCHOOL PHONE/EXT.# CELL/HOME PHONE (OPTIONAL)

GRADE LEVEL # OF STUDENTS (32 MAX.) # OF CHAPERONES SCHOOL CITY & COUNTY

Mailing Address (Check one: school home)

STREET ADDRESS

CITY STATE ZIP CODE E-MAIL

Explain any special needs to accommodate (physical, language (ESL), developmental, etc.): _____

CIRCLE THE DISCOVERY LAB YOU WOULD LIKE TO ATTEND (Read Discovery Lab Descriptions on page 4 for details):

- | | | | |
|-------------------------------|------------------------|---------------------------|--------------------------------|
| Spines, Slime & Tube Feet (K) | Shark Science (2) | From Stream to Sea (4-5) | Analyze This! (6-8) |
| Awesome Adaptations (1) | Suited for Success (3) | Scientists at Work (5) | Marine Mammals (9-12, college) |
| Fossil Frolic (2) | You Otter Know (4) | Adapted to the Deep (6-8) | Phylum Frenzy (9-12, college) |

REQUEST A DATE AND LAB TIME: Available October 18, 2011 to June 8, 2012. Select 10 dates/times in order of preference (1= first choice, 2= second choice, etc.). Check your school calendar to make sure you can definitely attend ALL dates you select. It is usually NOT possible to switch dates after the lottery. Cancellations are non-refundable.

DAY OF WEEK (Tuesday-Friday)	DATE	TIME (8:50, 10:50, either)	DAY OF WEEK (Tuesday-Friday)	DATE	TIME (8:50, 10:50, either)
1.			6.		
2.			7.		
3.			8.		
4.			9.		
5.			10.		

METHOD OF PAYMENT (select one):

PO: PO number _____ This is our preferred method of payment due to increased credit card processing fees. If paying by PO, include a copy of the PO with EACH application. **Do NOT send PO check. Your PO will be invoiced.**

Credit card: Applications received by lottery date will not be charged until late September.

VISA MC Credit card # _____ Exp. date _____

Signature _____ Name on card _____

How will your group arrive? Autos School/charter bus City bus Walking

Will you visit the Ocean Discovery Shop? Yes No

Will you stay for lunch? Yes No

Type of school? Public Private Home school

**Please double check that your application is complete and legible.
Mail application and payment information to the address at top. Thank you!**

OFFICE USE ONLY	DATE	INITIALS
Received		
Contact verified in database		
Scheduled in database		
Payment input in database		
CC charged/PO sent to PBS		
Confirmation sent		